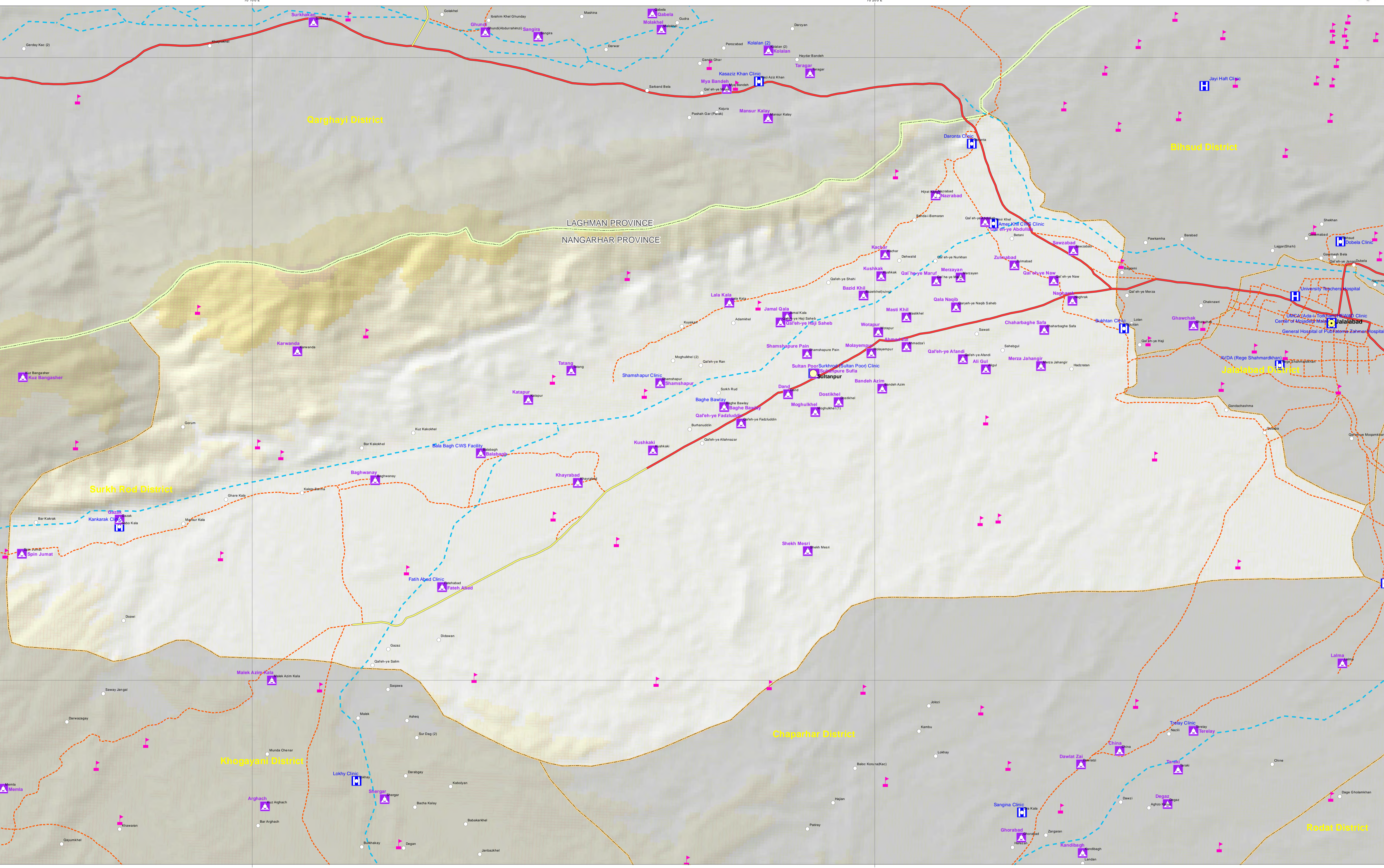


# AFGHANISTAN Hesarak District, Nangarhar Province



**Legend**

**Settlements**

- Villages
- District Center
- Province Center
- Capital

**Infrastructure**

- Primary Roads
- Secondary Roads
- Tracks
- Rivers
- Lakes
- Dams
- Schools
- IDP Locations

**Health Facilities**

- Health Facilities
- International Boundaries
- Provincial Boundaries
- District Boundaries

**Elevation in Meter**

0 - 200	1,500 - 2,000
200 - 400	2,000 - 3,000
400 - 1,000	3,000 - 4,000
1,000 - 1,500	4,000 - 6,000
	6,000 - 10,000

Date created: Sept 16, 2011  
 Datum/projection: WGS84/Geographic  
 For copies or questions contact: sdisperati@immap.org

The boundaries, names, and designations used on this map do not imply official endorsement or acceptance by IMMAP or USAID/OFDA. All information is the best available at the time this map was produced.

IMMAP is funded by the United States Agency for International Development (USAID)/ Office of U.S. Foreign Disaster Assistance (OFDA).

Data Sources:  
 Settlements: Afghanistan Information Management Services (AIMS)  
 Schools: Ministry of Education  
 Health Facilities: Ministry of Health

Scale at A1 is 1:50,000

0 2 4 8 Kilometers

**LOCATION DIAGRAM**

IMMAP

USAID  
 FROM THE AMERICAN PEOPLE