



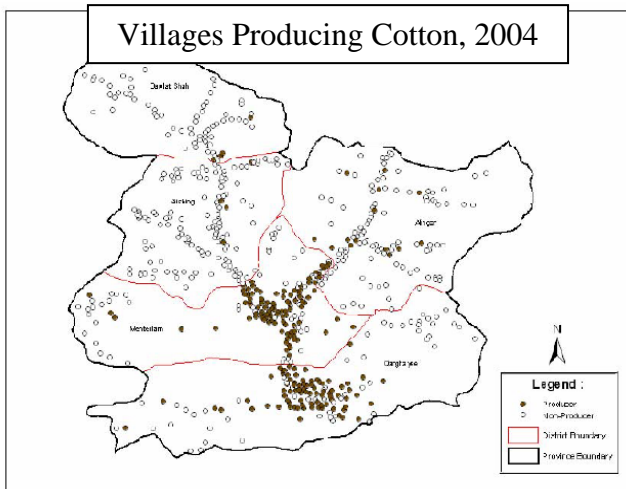
# Laghman Province

## About Laghman

Laghman is located in eastern region of Afghanistan. More than half of the province is mountainous (55%). Laghman has a total population of 382,280 people (2008 census). Laghman is also a Kuchi (nomadic herdsmen) pastoral destination.

## Laghman Districts: Agricultural Characteristics

Laghman has 5 districts; Mihtarlam, Qarghayi, Alingar, Alishang, and Dawlat Shah.



Unlike other provinces, Laghman has a large number of villages that grow one industrial crop or another: cotton, sugar, sesame, tobacco, and olives. However, the majority of these villages (47%) grow cotton. Fruit and nuts (37%) make up the biggest share in total crop production. The most important field crops grown in Laghman are wheat and rice. Most farmers have livestock; sheep and goats are the most prevalent.

info sheet

### Main Agricultural Crops

Fruits and Nuts	Grape
	Pomegranate
	Walnut, Mulberry
Grains	Wheat, Maize
Vegetables	Onion, Potato
Industrial	Cotton, Sugarcane

### Important Export Crops

Grape
Walnut
Pomegranate

## Possible Opportunities for Agriculture Improvement

Financial services for farmers (credit), animal husbandry, pasture improvement, horticultural project (nursery improvement), value adding (product processing), postharvest technology and irrigation system improvement are some potential areas for development.

Prepared by Hussain Sharifi, Nick Madden, and Mark Bell 2011

For more information visit: International Programs [ip.ucdavis.edu](http://ip.ucdavis.edu)

Primary reference: USAID report <http://afghanag.ucdavis.edu/afghanistan-province-agriculture-profiles>

Copyright © UC Regents Davis campus, 2011. All Rights Reserved.