

Unit A

Basic Principles of Animal Husbandry

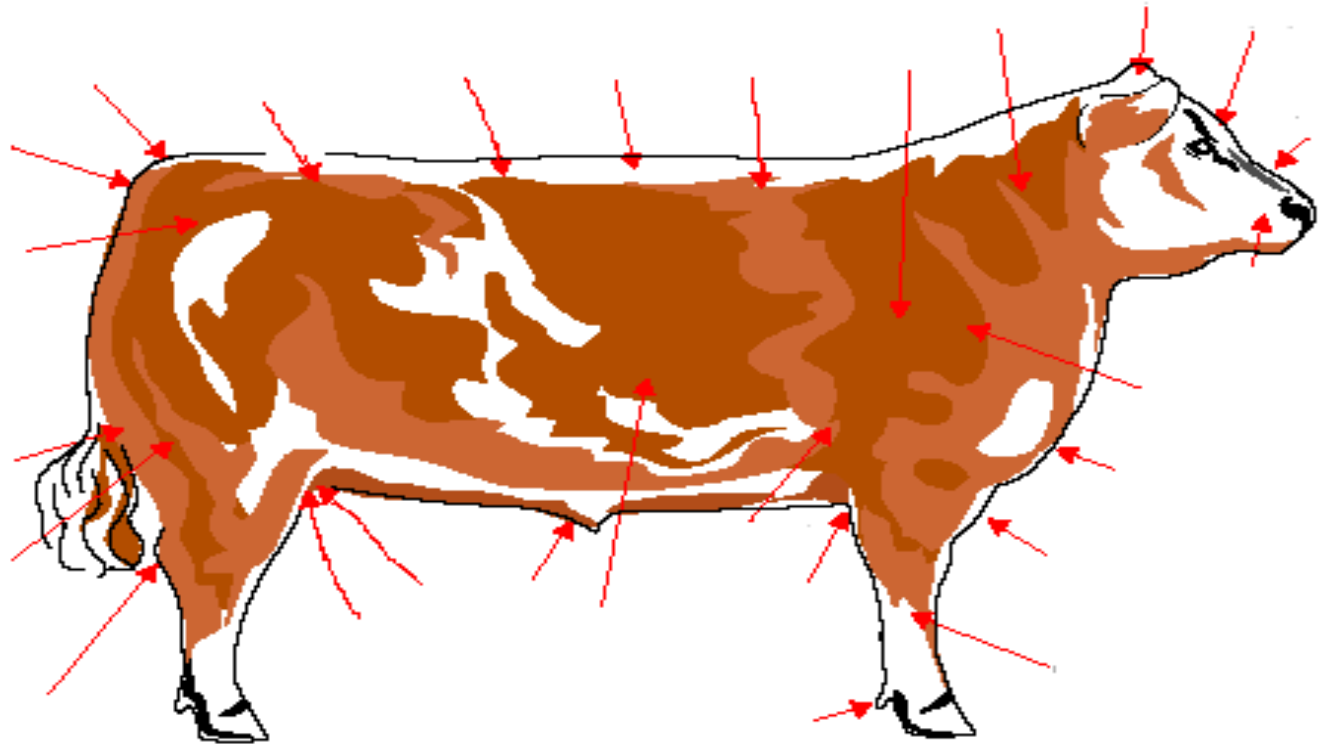
Lesson 3

Identifying the External Parts of Livestock

Beef Cattle

The main purpose of beef cattle is for meat consumption, we must know the proper terminology to select the best quality of animal for our herd.

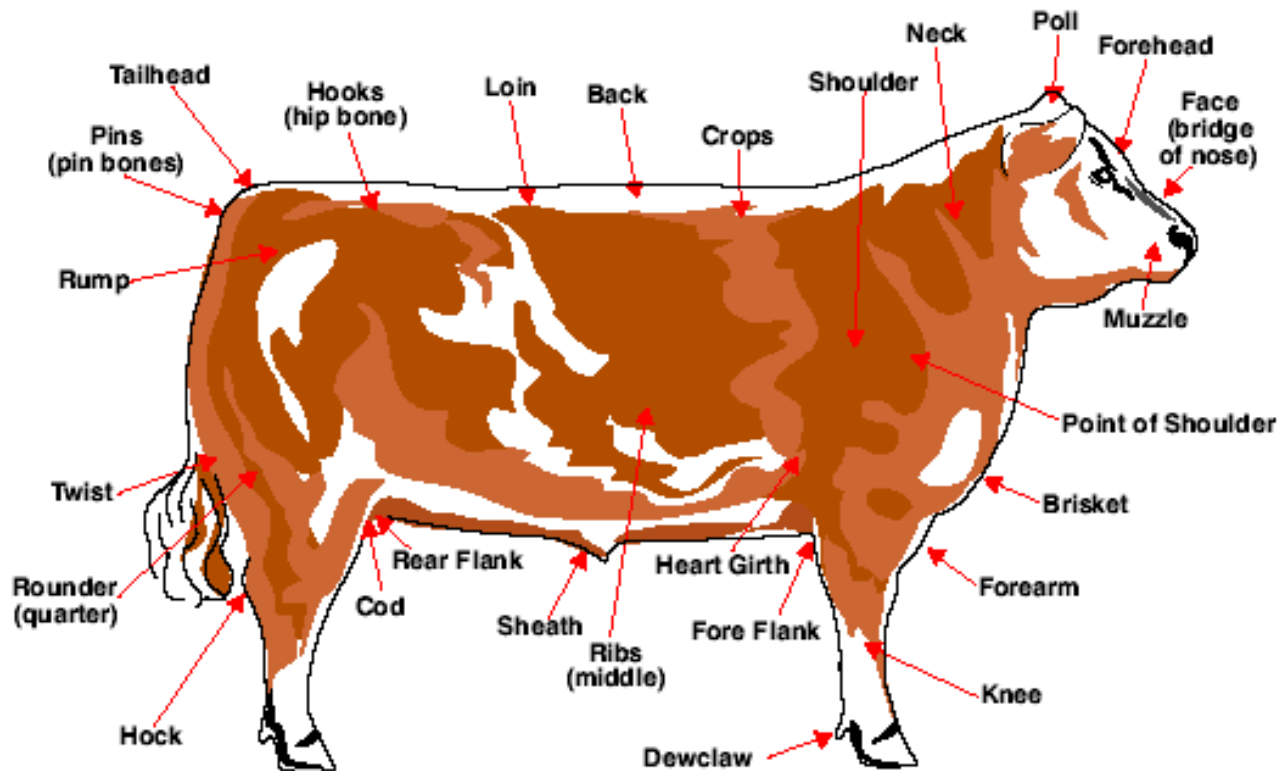
What are the external parts of a beef animal?



External Parts of a Beef Animal

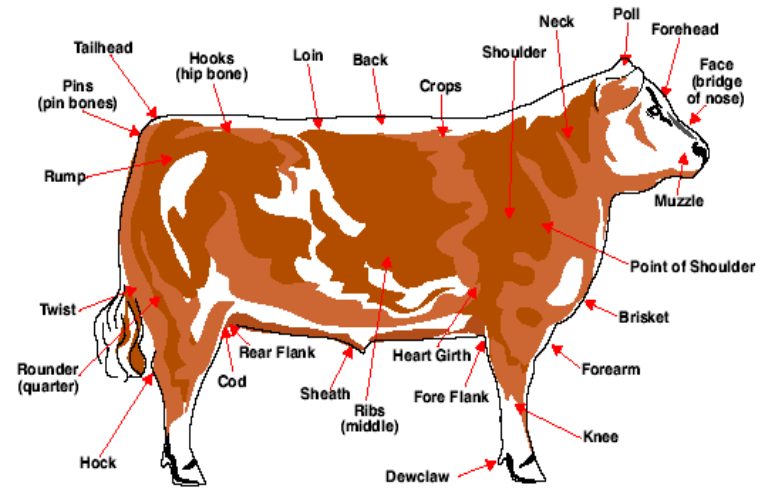
- Tail Head
- Hooks
- Loin
- Back
- Crops
- Shoulder
- Neck
- Poll
- Forehead
- Face
- Muzzle
- Point of Shoulder
- Brisket
- Forearm
- Knee
- Dewclaw
- Fore flank
- Heart Girth
- Ribs
- Sheath
- Rear Flank
- Cod
- Hock
- Rounder
- Twist
- Rump
- Pins

External Parts of a Beef Animal

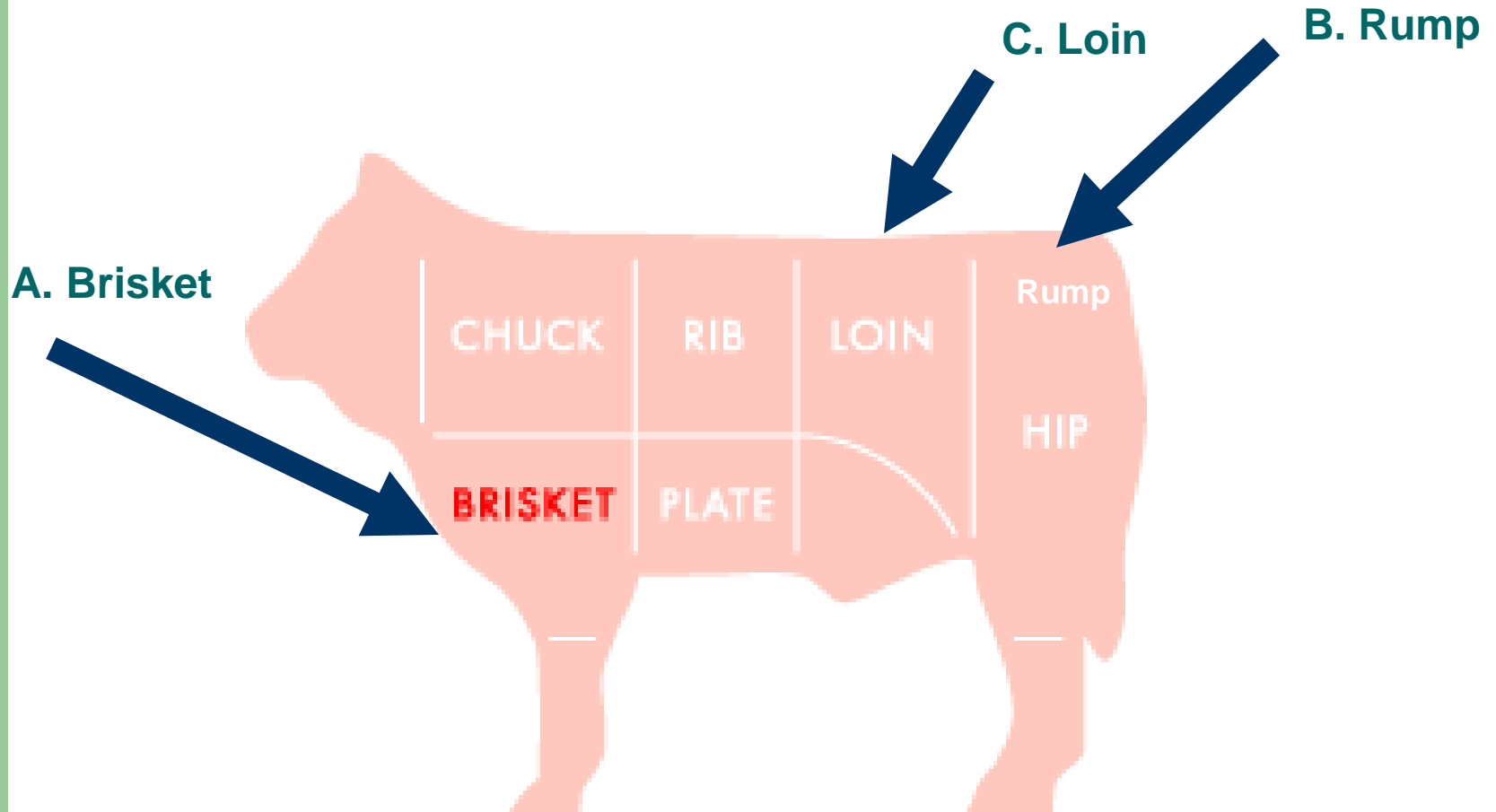


Important Features

- A. Loin - The loin is part of the back. It is the area between the last rib and the hip bone.
- B. Rump - The rump is also part of the back, and runs from the hip bone to the end of the animal, which in cattle is the tail head.
- C. Brisket - The mass of connective tissue and fat covering front of animal between the front legs.



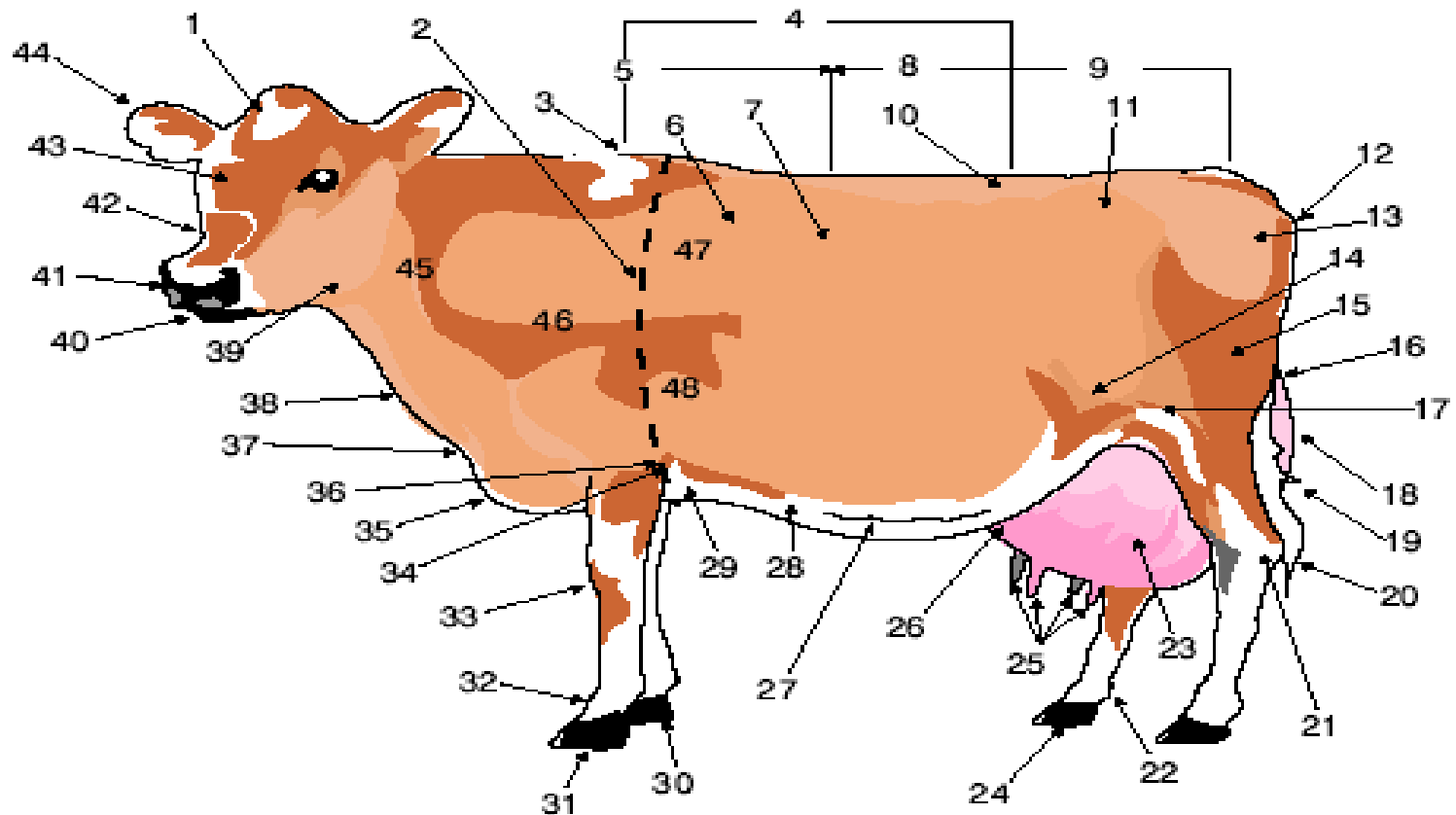
Important Features



Dairy Cattle

Since the main purpose of dairy cattle is to produce milk, their structure has been developed to do so more efficiently by intensive breeding programs.

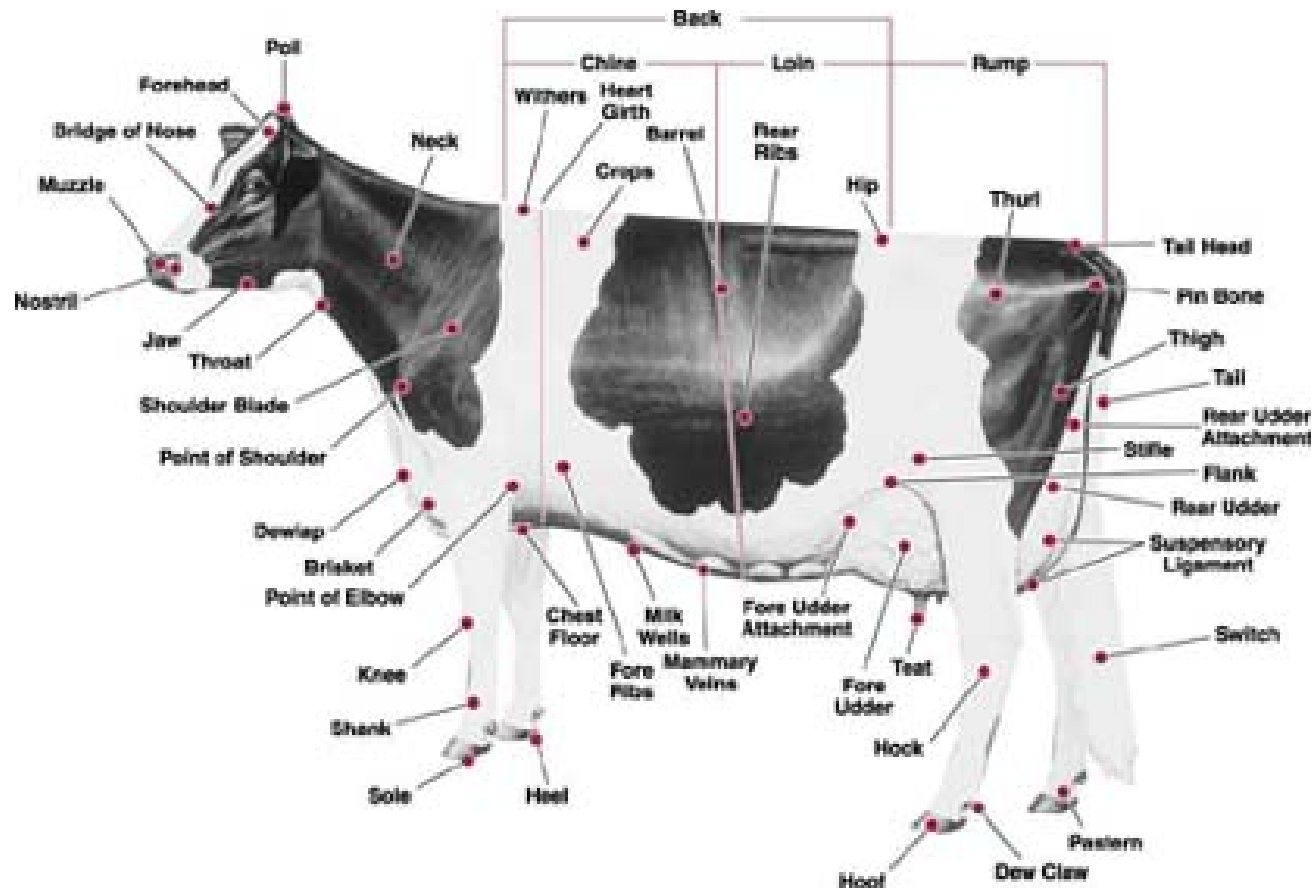
What are the external parts of a dairy animal?



External Parts of a Dairy Animal

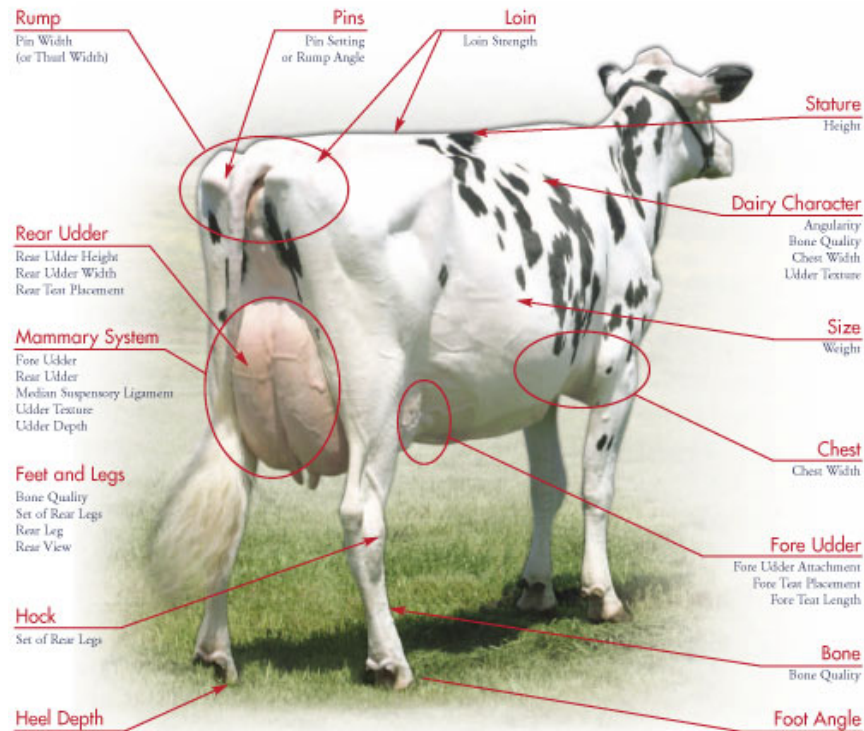
- Tail Head
- Hooks
- Loin
- Back
- Crops
- Shoulder
- Neck
- Poll
- Forehead
- Face
- Muzzle
- Point of Shoulder
- Brisket
- Forearm
- Knee
- Dewclaw
- Fore flank
- Heart Girth
- Ribs
- Sheath
- Rear Flank
- Cod
- Hock
- Rounder
- Twist
- Rump
- Pins

External Parts of a Dairy Animal

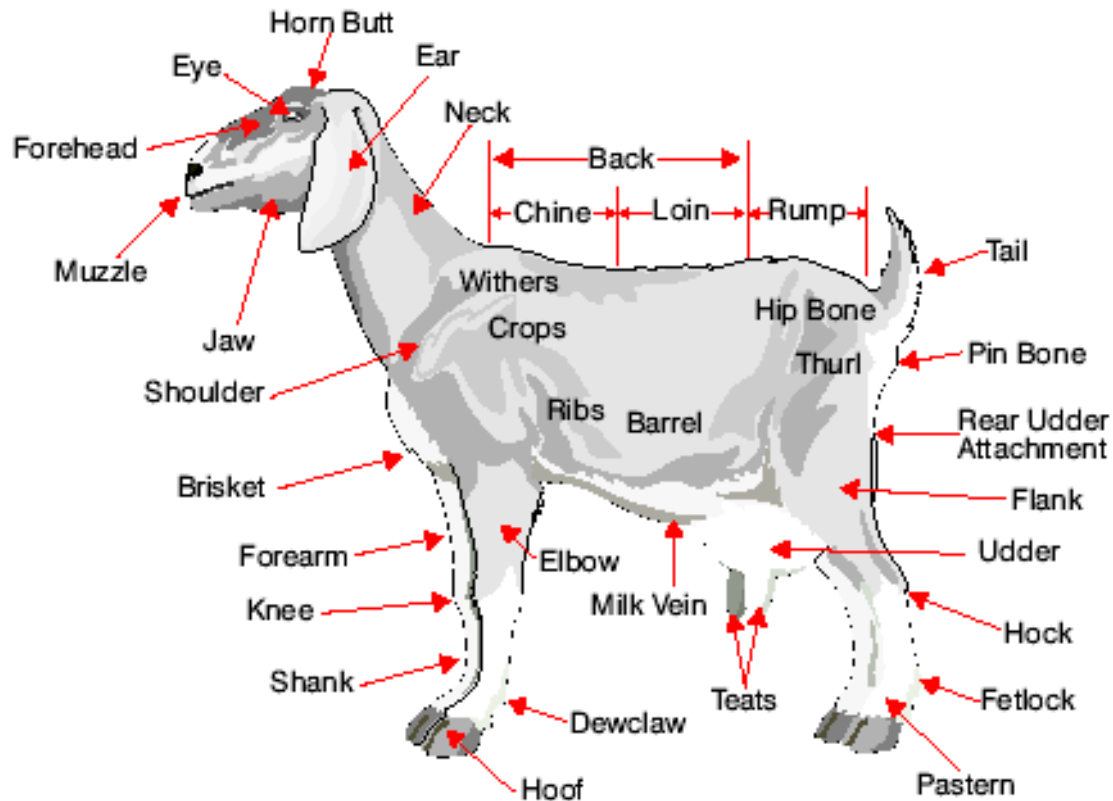


External Parts Dairy Cattle

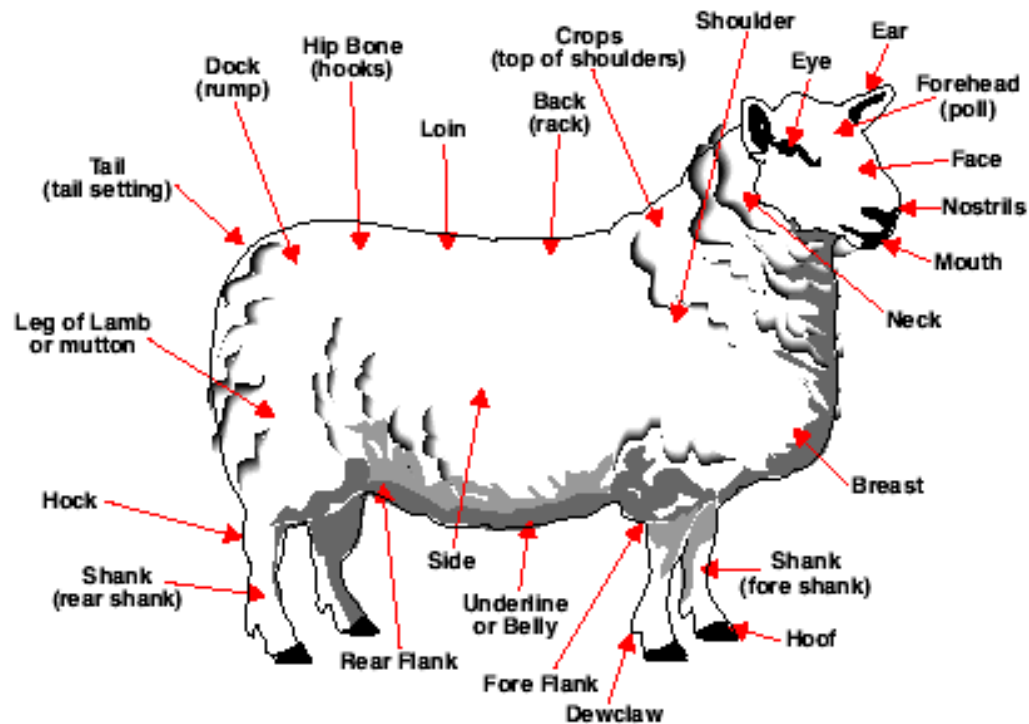
Rear View



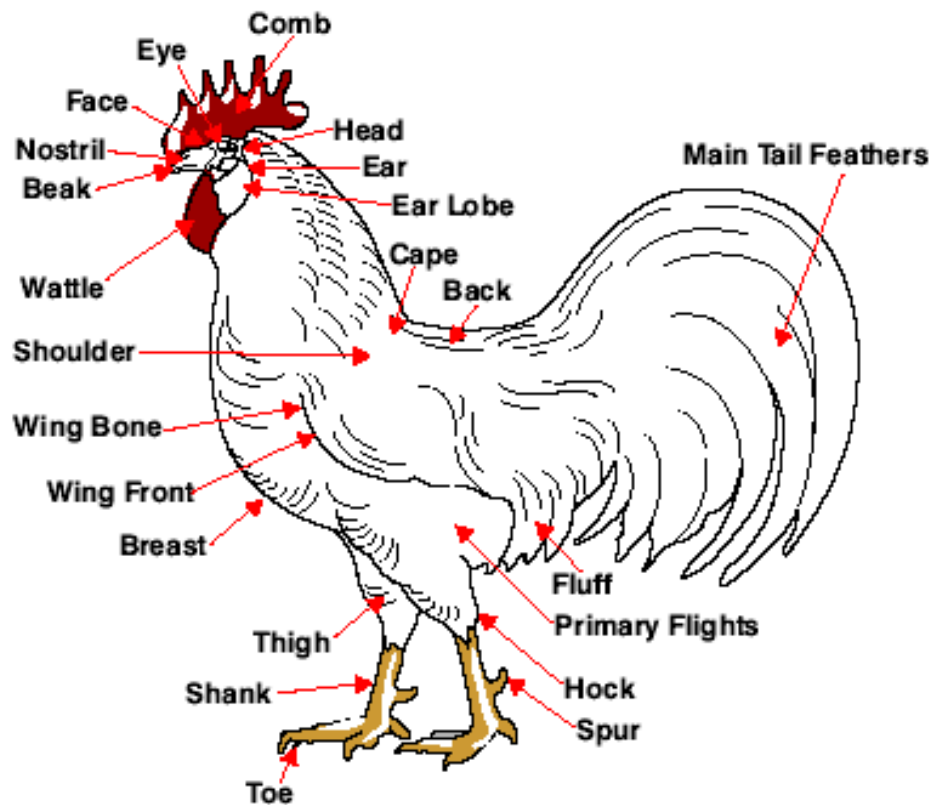
External Parts of a Goat



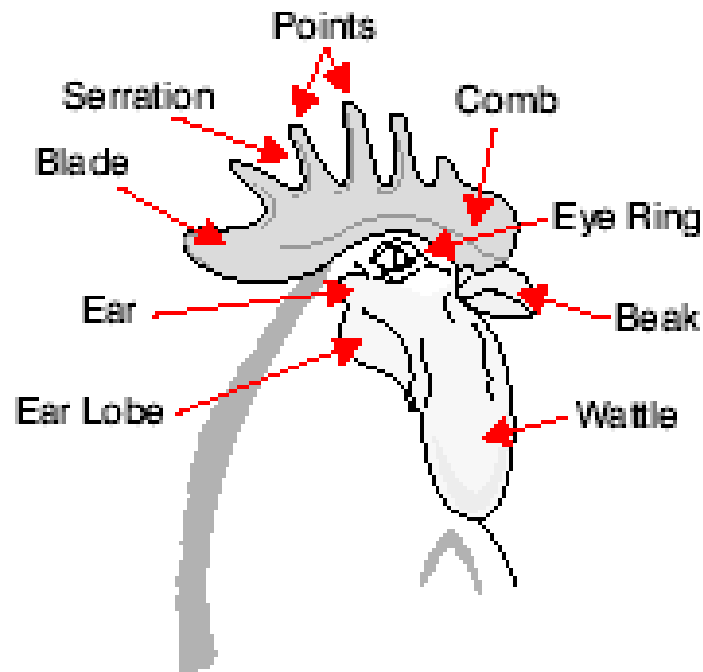
External Parts of a Sheep



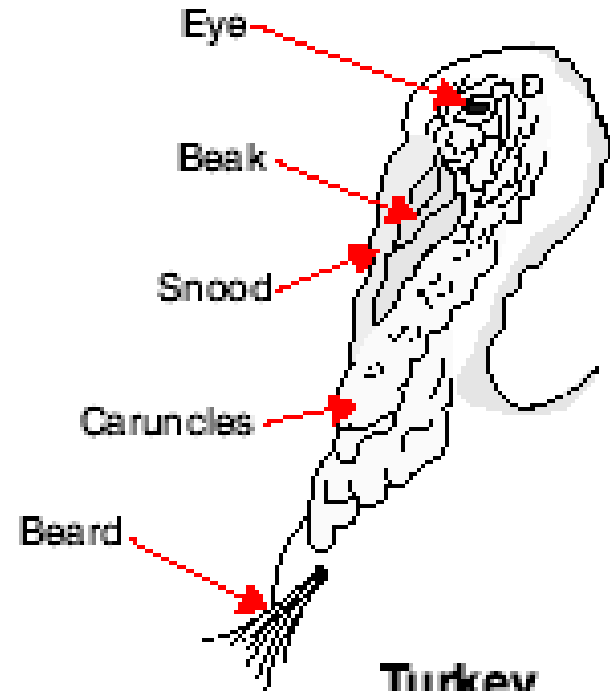
External Parts of Poultry



External Parts of Poultry

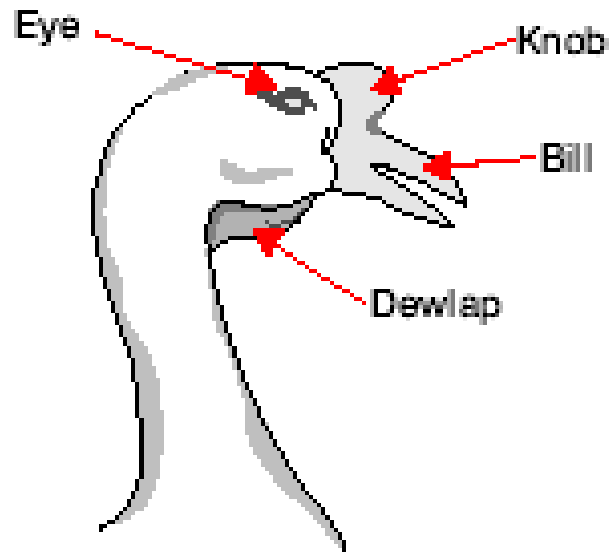


Chicken

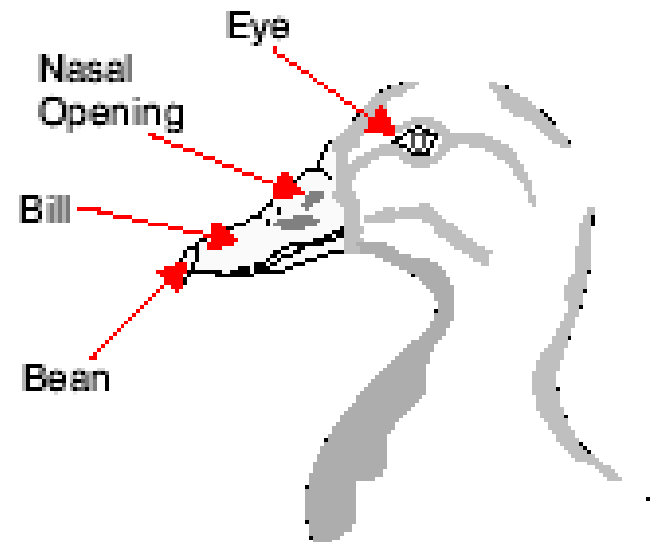


Turkey

External Parts of Poultry



Goose



Duck