

# Unit A: Introduction to Cattle Management

## Lesson 3: Anatomy of Cattle

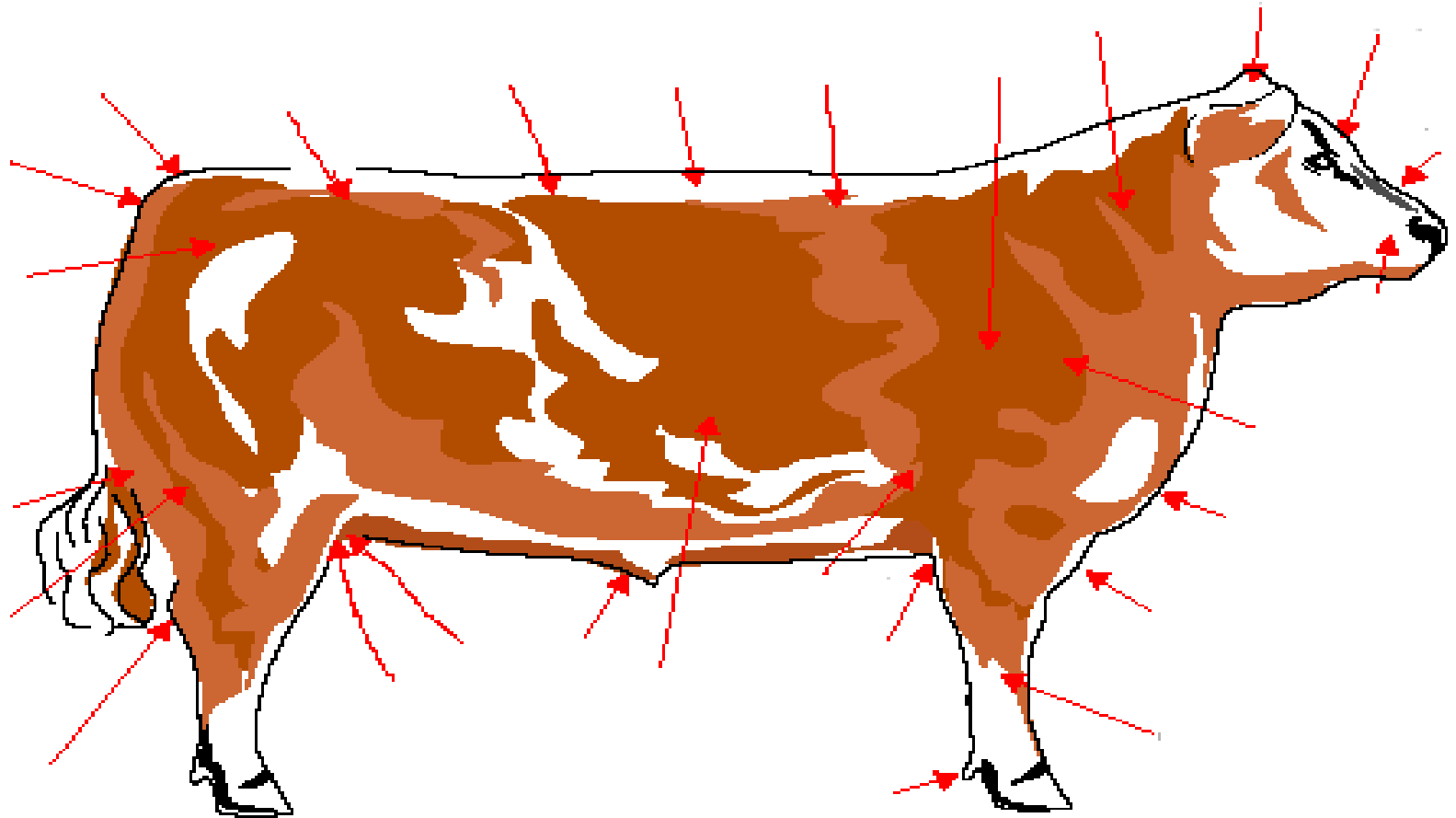
# Terms

- Gestation
- Mammary system
- Parturition
- Reproductive system
- Testes

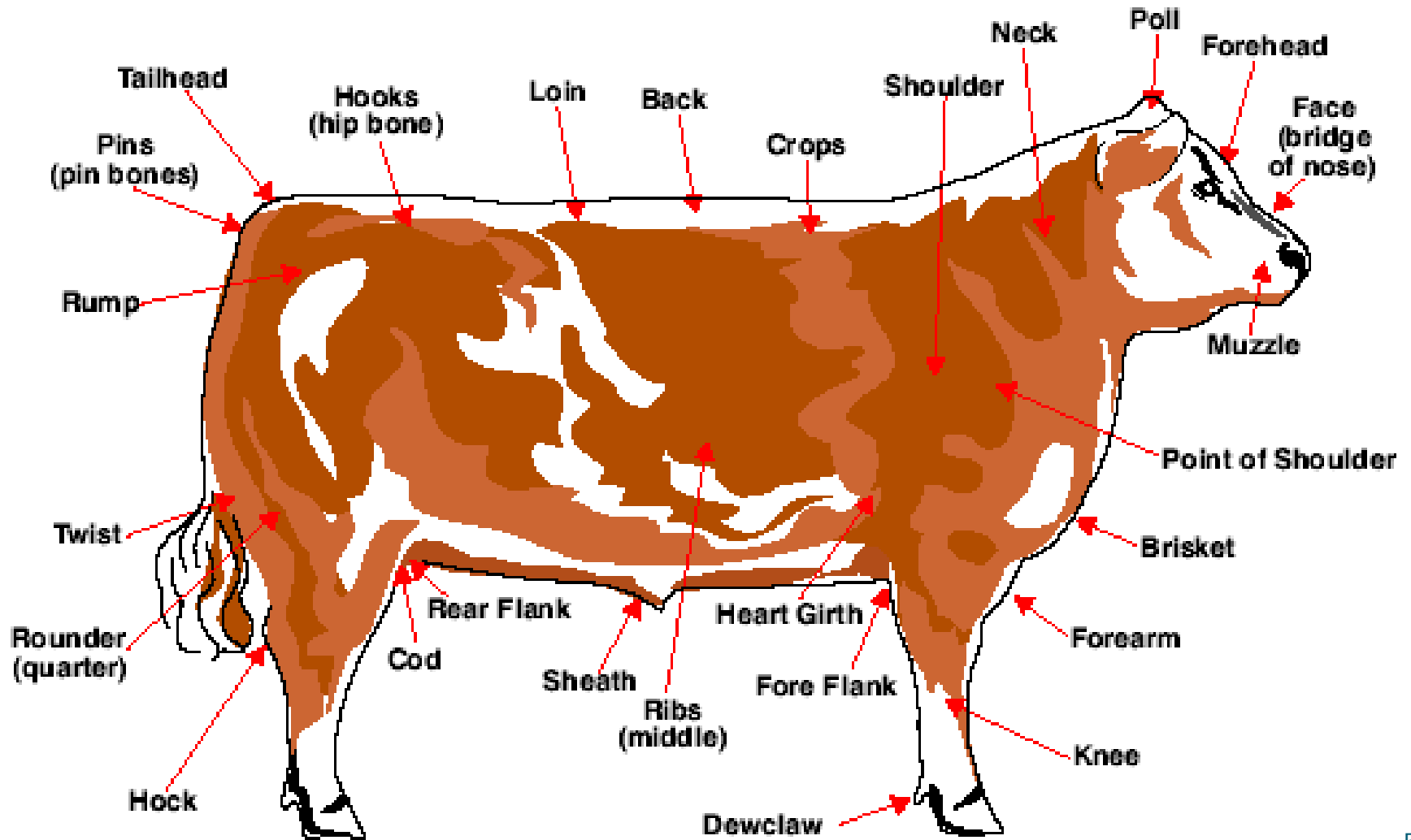
# What are all the parts of a beef animal?

- ▣ Since the main purpose of beef cattle is for meat consumption, we look at them not only to identify their basic parts, but also to identify the beef cuts on an animal.
  - There are many external parts of beef cattle that you must know in order to speak the language when selecting one beef animal over another. They are more than just general parts like eyes, head, tail, belly, and back.
  - There are also many terms you should know in reference to beef cuts that are taken from an animal. These are meat terms like loin, sirloin, stew meat, and short ribs.

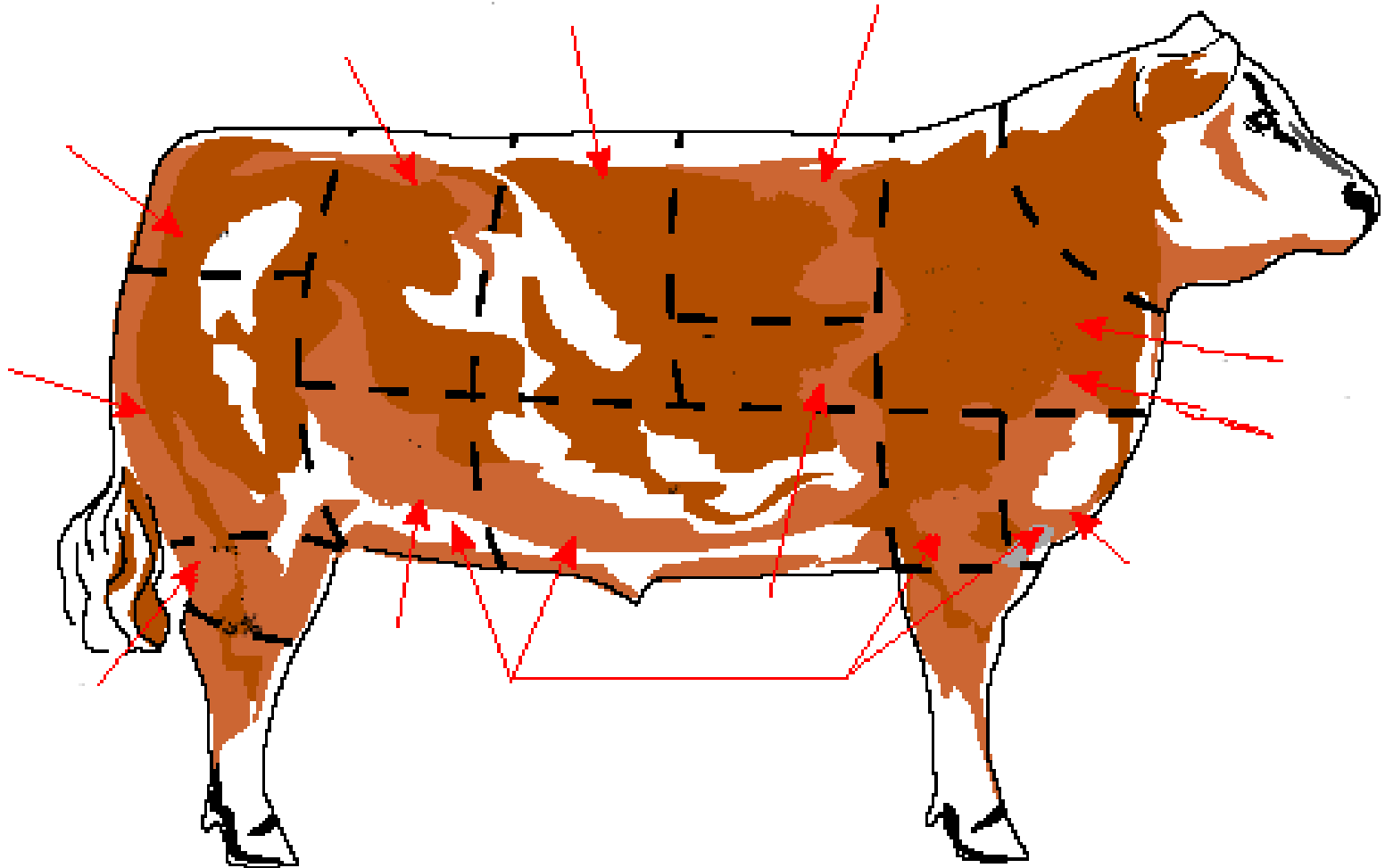
# What are the external parts of a beef animal?



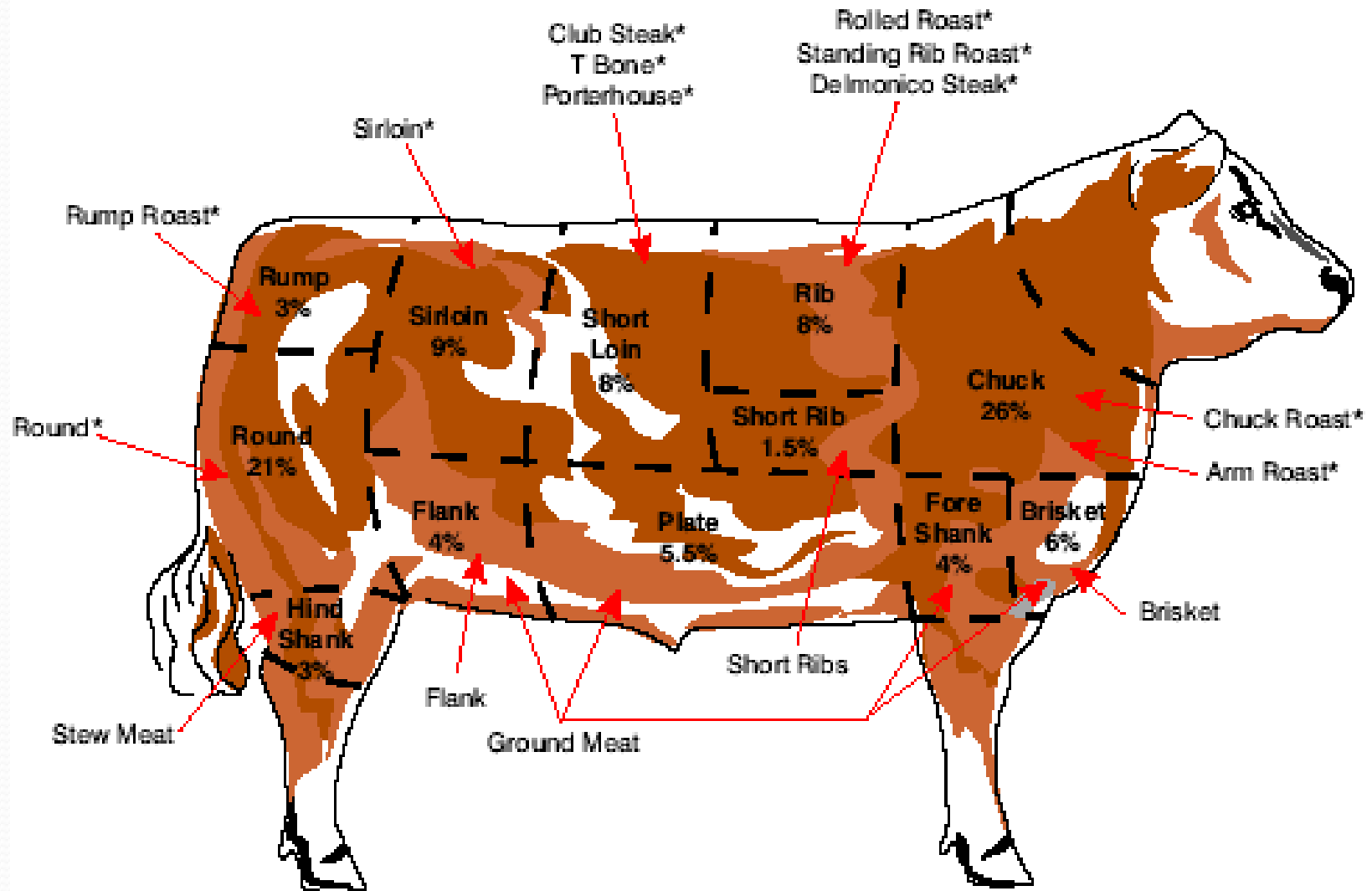
# External Parts of a Beef Animal



# What are the Beef Animal Meat Cuts?

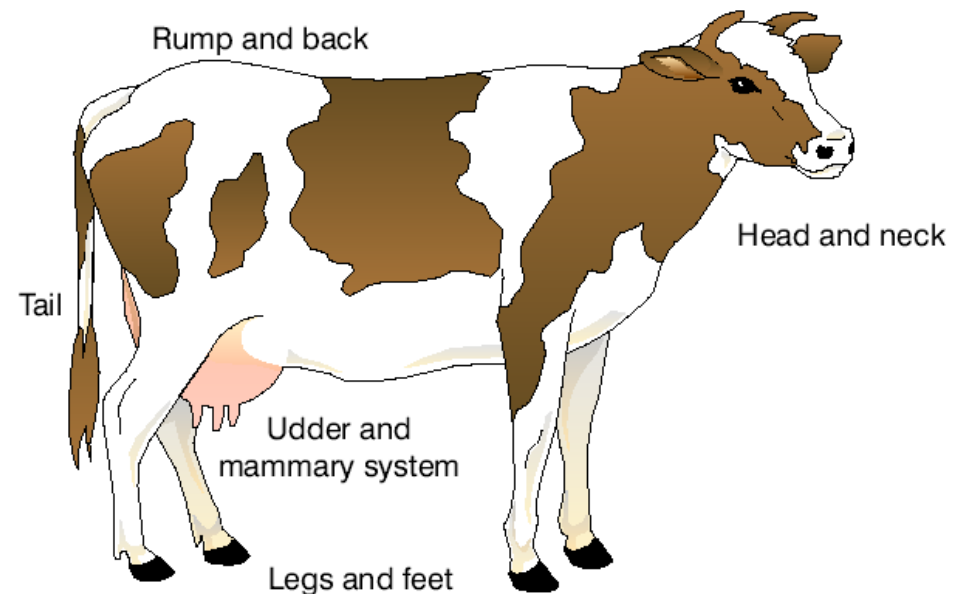


# Beef Animal Meat Cuts



# What are the major external parts of a dairy cow?

- Head & neck
- Legs and feet
- Udder and mammary system
- Rump and back
- Tail





# What are the major internal parts of dairy cattle?

- Since dairy cattle are used mainly for milk production, their reproductive system and mammary system are the most important internal parts.
  - The *reproductive system* is the system used to reproduce cattle by natural, in vitro, and various artificial means of insemination.
  - It is the most important factor in improvement of the dairy breeds.

# What are the major internal parts of dairy cattle?

- ▣ The male reproductive system serves the purposes of producing sperm cells and male sex hormones.
- ▣ The *testes* are the organs that produce sperm cells and the male hormone testosterone.

# What are the major internal parts of dairy cattle?

- ▣ The female reproductive system serves the purposes of producing eggs and the female sex hormones estrogen and progesterone.
- ▣ This system is also responsible for ***gestation***, which is the time between when the egg is fertilized by the sperm and the birth of a calf.
- ▣ The technical term for the birth of a calf is called ***parturition***.

# What are the major internal parts of dairy cattle?

- ▣ The *mammary system* is the system responsible for producing milk after parturition.
- ▣ It includes teats, udder, fore and rear udder attachments, alveoli, suspensory ligaments, mammary veins, and milk wells.
- ▣ The production of milk is dependent on management techniques including proper feeding, watering, and breeding programs.

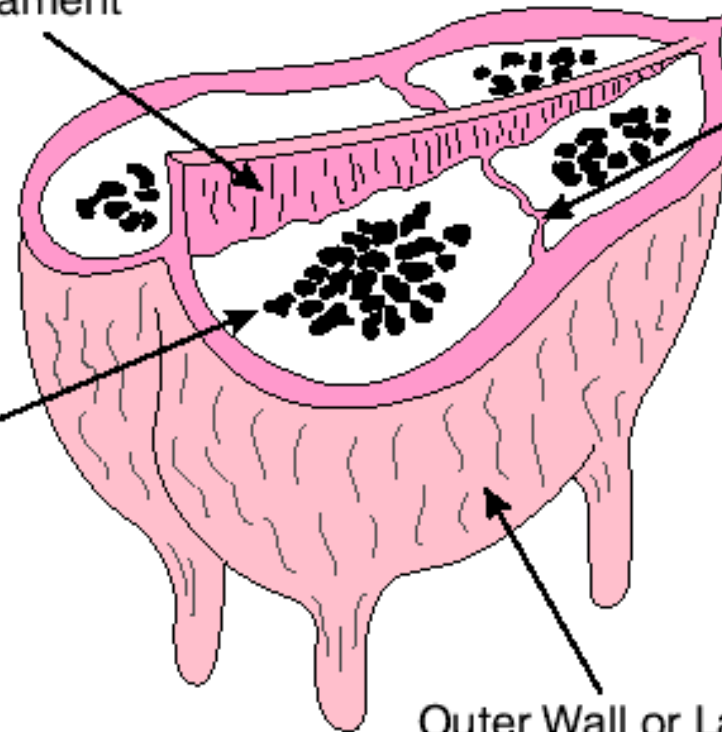
# Parts of the Mammary System

Central Wall or Median  
Suspensory Ligament

Fine Membrane  
Between Quarters

Alveoli

Outer Wall or Lateral  
Suspensory Ligaments



# Review/Summary

- What are all the parts of a beef animal?
- What are the major external parts of a dairy cow?
- What are the major internal parts of dairy cattle?