



Thrips



Afghanistan Agricultural Extension Project

fact sheet

What is a thrip?

Thrips are tiny, slender insects with wings with long fringes of hair. They feed by puncturing host cells and sucking out the contents. Pest species are plant feeders that scar leaf, flower, or fruit surfaces or distort plant parts.

Thrip life cycle includes the egg, two actively feeding larval stages, nonfeeding propupal and pupal stages, and the adult.

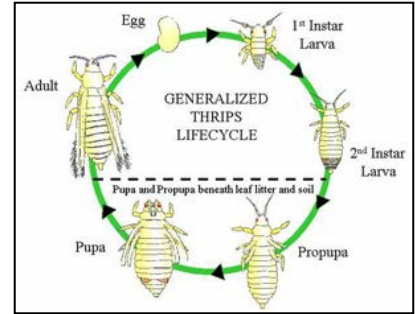


Figure 1. Thrip life cycle

Damage.

Thrips prefer to feed in rapidly growing tissue. Feeding by thrips typically causes tiny scars on leaves and fruit, called stippling, and can stunt growth. Damaged leaves may become papery and distorted. Infested plant terminals may discolor, become rolled, and drop leaves prematurely.

Detection.

Use hand lens for seeing thrips. Use yellow or blue sticky traps to monitor thrips & winged adult thrips.



Figure 2. Hand lens

Use yellow sticky cards* or make yellow sticky boards* to monitor thrip populations. Sticky cards are about 15 mm by 30 mm in size. Crops which have thrips include wheat, onions, melons, cucumbers, tomatoes, peppers and other vegetables.

Look into the flowers of cucumber, tomato, eggplant and determine if thrip larva to adults are present.

Establish scouting program to determine infestation of thrips. Scout every 3 to 5 days.

Control.

- 0 to 5 thrips per 2 mm by 2 mm means low number.
- 5 to 15 thrips per 2 mm by 2 mm means population is building.
- Greater than 15 thrips per 2 mm by 2 mm, begin spray program.

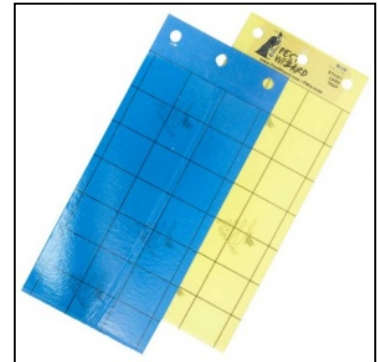


Figure3. Sticky cards

*Sticky cards can be made with bright yellow paint with application of glue 'Stickem Special'

*Sticky boards can be made by painting bright yellow paint and then applying 'Stickem Special'

For more information visit: <http://www.ipm.ucdavis.edu/>

Prepared by Gary Pearson, UC Davis, 2012

Reference: <http://www.ipm.ucdavis.edu/PMG/PESTNOTES/pn7429.html#LIFE>

Copyright © UC Regents Davis campus, 2012. All Rights Reserved.