

An aerial photograph showing a city with a large area of ashfall in the foreground. The ashfall is a wide, flat, greyish-brown expanse that has partially covered the city's buildings and streets. In the foreground, there is a rocky, sparsely vegetated slope with a few small green trees. The city in the background is densely packed with buildings and structures, some of which appear to be partially covered in ash.

# Plenary Session 1

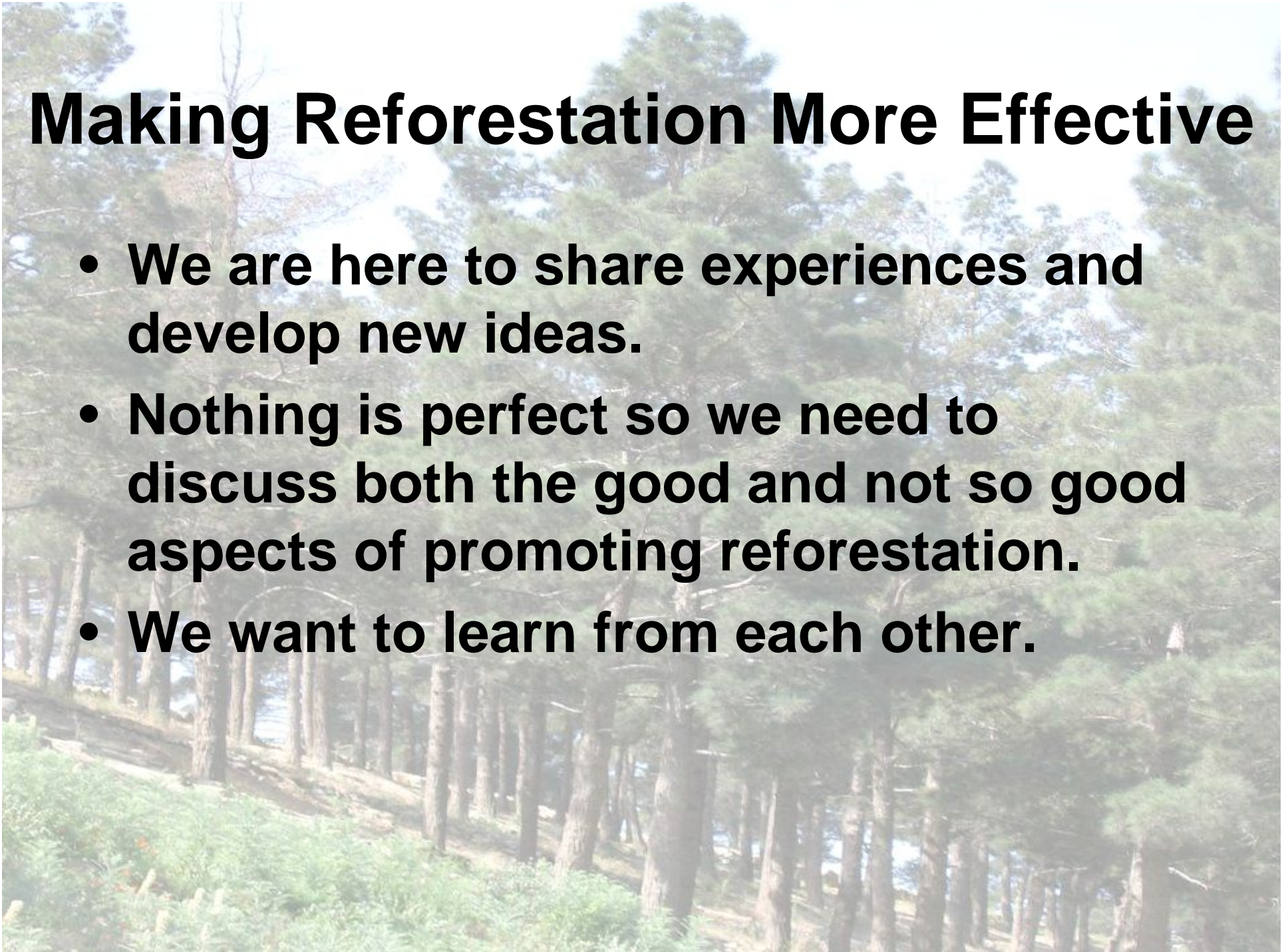
**What kind of trees do we want and where would we like them?**

Mr. Ghoyur



# **Making Reforestation More Effective**

- **We are here to share experiences and develop new ideas.**
- **Nothing is perfect so we need to discuss both the good and not so good aspects of promoting reforestation.**
- **We want to learn from each other.**





# Reforestation Occurs in Many Different Areas

- Home compounds
- Public Green Areas
- Marginal Lands





# Different tree and shrub species are appropriate for different areas

- Upland hills and mountains
- Along streams and rivers
- Near lakes
- Around agricultural areas





# The purpose of the reforestation should be considered

- Environmental Improvements
- Aesthetic and standard of living improvements
- Erosion reduction and soil conservations
- Harvest of material
- Protection (wind and cold breaks)





# Working Groups

- 1. Why Plant? Incentives for planting and care of trees**
- 2. Where to plant trees and who will plant them?**
- 3. Private Sources of planting stock**
- 4. Public Sources of planting stock**



# Work Group 1: Incentives

- Incentives for planting
- Incentives for maintenance and care





## **Work Group 2: Where to plant trees and who will plant them**

- **Private land**
- **Public land**
- **Volunteers**
- **Paid employees**





# Work Group 3: Private sources of planting stock

- Who
- Where
- Experiences





# Work Group 4: Public sources of planting stock

- Who
- Where
- Experiences





# For Each Workgroup

- Name of group
- Name of work group participants and organization that they represent
- Issues discussed
- Ideas that can be used to make reforestation more effective