



Paktya Province

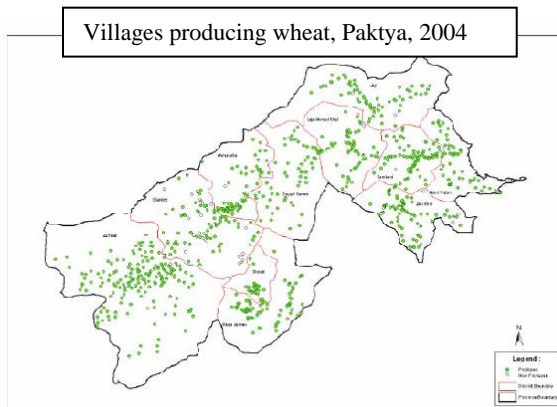
About Paktya

Paktya province is located in the south east of Afghanistan. Nearly the entire province is mountainous and covered by forest. Paktya has a total population of 514,816 people (2008 census). Around 95% of the population in Paktya lives in rural areas. Paktya has a population of Kuchi (nomadic herdsman) which varies depending on the season.



Paktya Districts: Agricultural Characteristics

Paktya has 11 districts: Gardez, Sayyid Karam, Zurmat, Shwak, Wuza Jadran, Ahmad Khel, Jani Khel, Dand Wa Patan, Camkanay, Jaji, and Ahmadabad.



Since Paktya has a cold climate and because much of the province is covered by forest, people have less land to grow crops. Most districts have only one growing season. In Paktya, most people have dairy cows, sheep, goats and chickens. But due to recent drought problems, the number of household animals has decreased.

Main Agricultural Crops

Fruits	Apple
	Grape
	Apricot
Grains	Wheat
	Maize, Rice
Vegetables	Onion, Potato
Industrial	Cotton, Tobacco

Important Export Markets

Pakistan

Possible opportunities for Agriculture improvement

The most common crops grown in Paktya are wheat, maize, rice, and potato and most people have dairy cows, sheep, goats and chickens. Forest is another source of income as people sell the wood to other provinces and to Kabul city - especially during winter time. Irrigation system improvement, bee keeping, investment in forest management, financial services for farmers (Credit), animal husbandry, value adding (product processing), and postharvest technology are some potential areas for development.

Prepared by Hussain Sharifi and Mark Bell 2011

For more information visit: International Programs ip.ucdavis.edu

Primary reference: USAID report <http://afghanag.ucdavis.edu/afghanistan-province-agriculture-profiles>

Copyright © UC Regents Davis campus, 2011. All Rights Reserved.