



Parwan Province

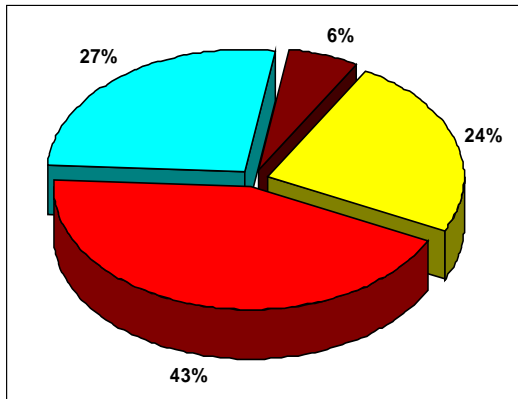
About Parwan

Parwan is located in central Afghanistan, just north of Kabul. Parwan is mountainous in the north with flat plains good for cropping in the center and south. Parwan has a total of 760 villages with an estimated population of 633,354 people (2008 census).

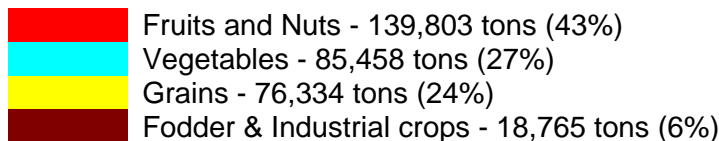


Parwan Districts: Agricultural Characteristics

Parwan has 10 districts: Bagram, Charikar, Ghorband, Jabal seraj, Kohi Safi, Sayed Khel, Shinwari, Shekh Ali, Salang, Surkhi Parsa.



The total crop production in 2008 was estimated at 320,361 metric tons (MT), consisting of fruits and nuts (43%), vegetables (27%), grains (24%) and fodder and industrial crops (6%). The total 2008 market value for agricultural production was estimated at \$193 million (farm gate). Most farmers have livestock; the topography of the area (hilly and mountainous) makes a good environment for raising animals. Sheep, goats and cows are the most prevalent livestock.



Main Agricultural Crops

Fruits and Nuts	Grape, Mulberries
	Apricot, Almond
	Apple, Watermelon
Grains	Wheat
	Maize
Vegetables	Potato, Onion, Cucumber, Tomato

Important Export Crops

Fresh Produce	Dry Produce
Grapes	Raisin
Apricot	Apricot
	Almond
	Mulberries

Possible Opportunities for Agriculture Improvement

Parwan is famous for mulberries, vegetables and dried fruit. Herders raise sheep and goats in several districts. Value adding (product processing), postharvest technology and irrigation system improvement are some potential areas for development.

Prepared by Hussain Sharifi, Nick Madden and Mark Bell 2011

For more information visit: International Programs ip.ucdavis.edu

Primary reference: USAID report <http://afghanag.ucdavis.edu/afghanistan-province-agriculture-profiles>

Copyright © UC Regents Davis campus, 2011. All Rights Reserved.