



Uruzgan Province

About Uruzgan

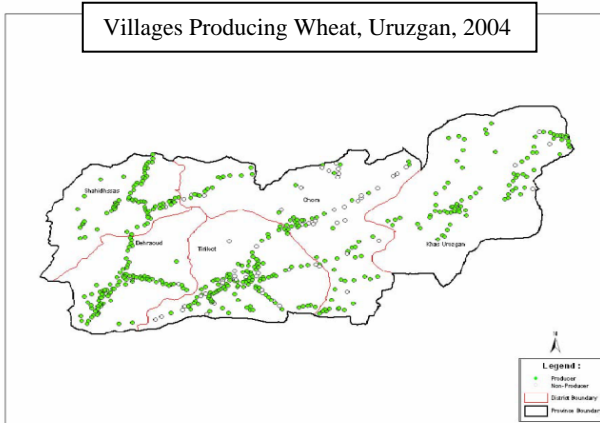
Uruzgan province is located in the southern region of Afghanistan. Around 72% of the province is mountainous. The has a total population of 320,589 people (2008 census). Around 98% of the population lives in rural areas. Uruzgan has a population of Kuchi (nomadic herdsmen) which varies depending on the season.



Uruzgan Districts: Agricultural Characteristics

Uruzgan has 5 districts: Tarin Kowt (Uruzgan center), Chora, Khas Uruzgan, Shahidi Hassas, and Deh Rahwod.

Villages Producing Wheat, Uruzgan, 2004



Crop production represents the major income source for more than 60% of households. About 90% of agriculture is based on surface irrigation coming from major rivers. Animal husbandry is also a major income source for almost 35% of households. Farmers raise dairy cows, donkeys, and sheep. Important animal products are ghee, quroot, and wool. It is estimated that agriculture production has dropped 35% due to drought.

Main Agricultural Crops

Fruits and Nuts	Apricot, Almonds Melon, Watermelon
Grains	Wheat, Barley, Maize, Rice
Vegetables	Potato, Onion, Tomato
Spices	Cumin, Caraway

Important Markets

Kandahar

Possible Opportunities for Agriculture Improvement

Cumin, maize, rice, potatoes, almonds and dried apricots are cash crops for farmers and the main market is Kandahar. There is a need for business training so farmers can make better trades in Kandahar. Many farmers also have poor seed stock in terms of variety and quantity and certified seed is important. Irrigation system improvement, financial services for farmers (credit), field fertility/fertilizers, animal husbandry, and postharvest technology are also some potential areas for development.

Prepared by Hussain Sharifi, Nick Madden, and Mark Bell 2011

For more information visit: International Programs ip.ucdavis.edu

Primary reference: USAID report <http://afghanag.ucdavis.edu/afghanistan-province-agriculture-profiles>

Copyright © UC Regents Davis campus, 2011. All Rights Reserved.