

# **Unit E**

# **Segments of Animal**

# **Agriculture**

## Lesson 3

## Exploring the Poultry Industry

# Terms

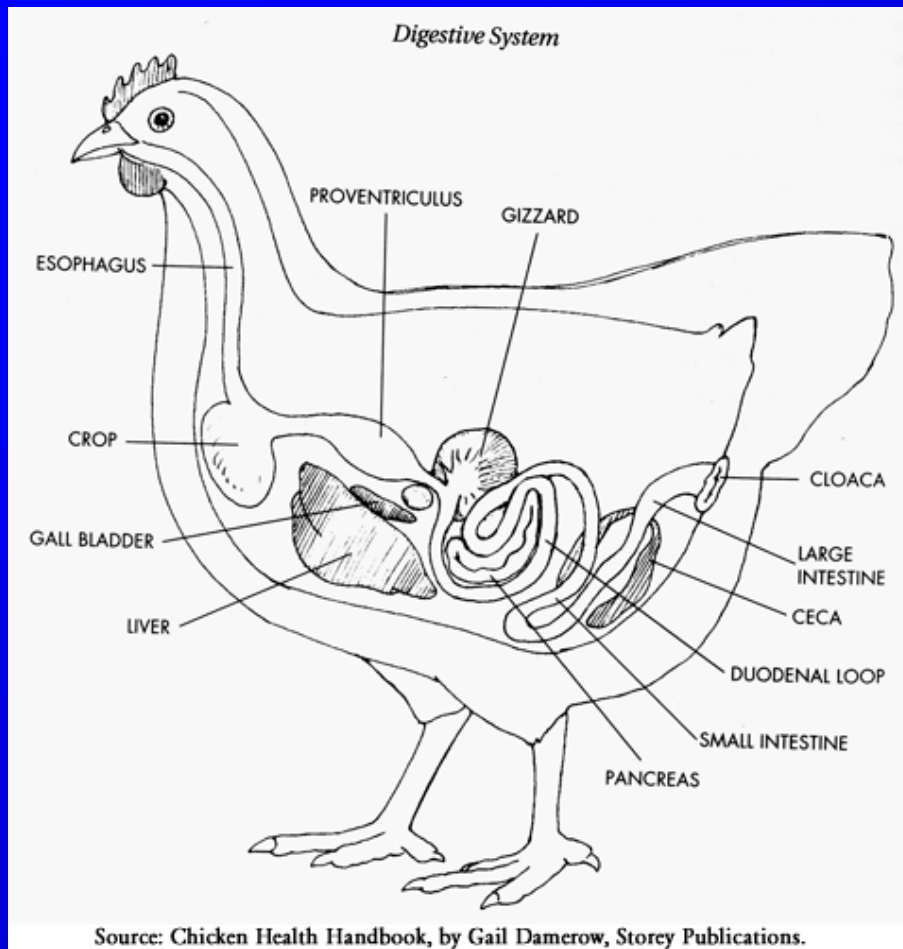
- Bantams
- Broilers
- Chick
- Cockerels
- Drake
- Duckling
- Gander
- Goose
- Gosling
- Hens
- Layers
- Poult
- Poultry
- Pullet Producers
- Pullets
- Roosters
- Tom

# What is poultry?

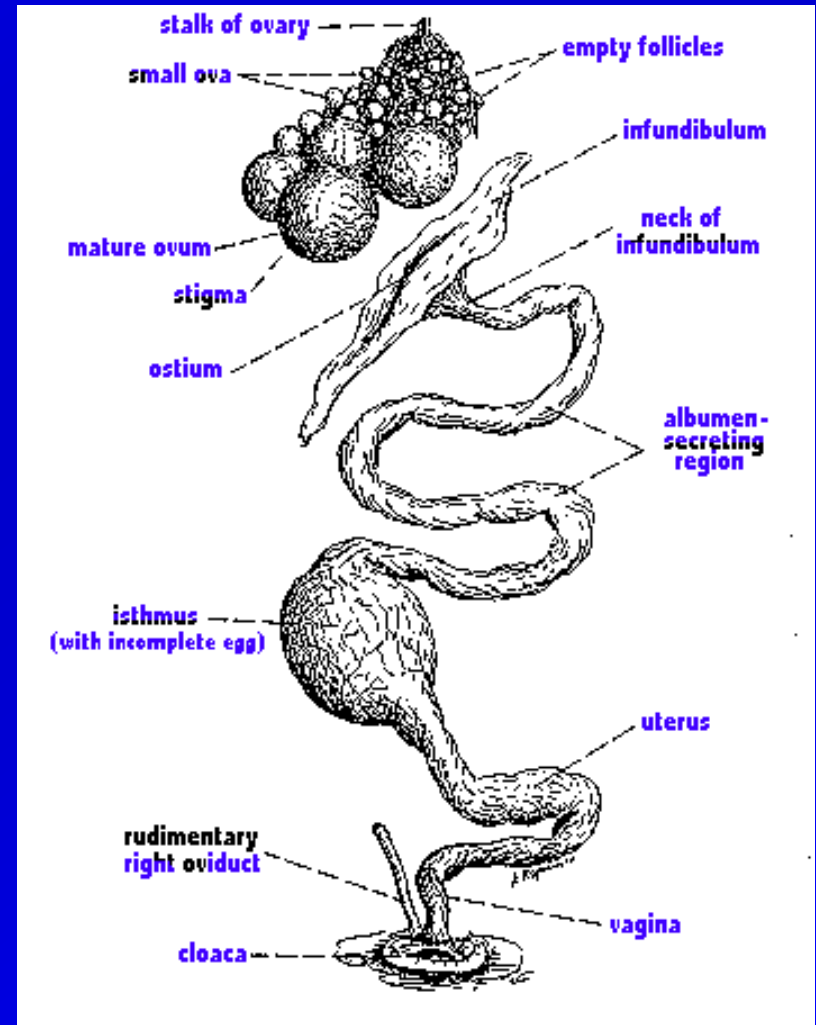
- Poultry
  - group name for all domesticated birds used for meat, eggs, and feathers
  - referred to as fowl
  - have wings, backbones, & feathers
  - some can swim

# What is the difference between poultry and other animals?

- Digestive System
  - has a gizzard instead of teeth
- Reproductive System
  - egg laying after mating for fertile eggs
  - artificial insemination is needed because some birds are unable to mate naturally because of their mass of flesh
- Externally
  - most birds are similar
  - features on the head and neck help identify

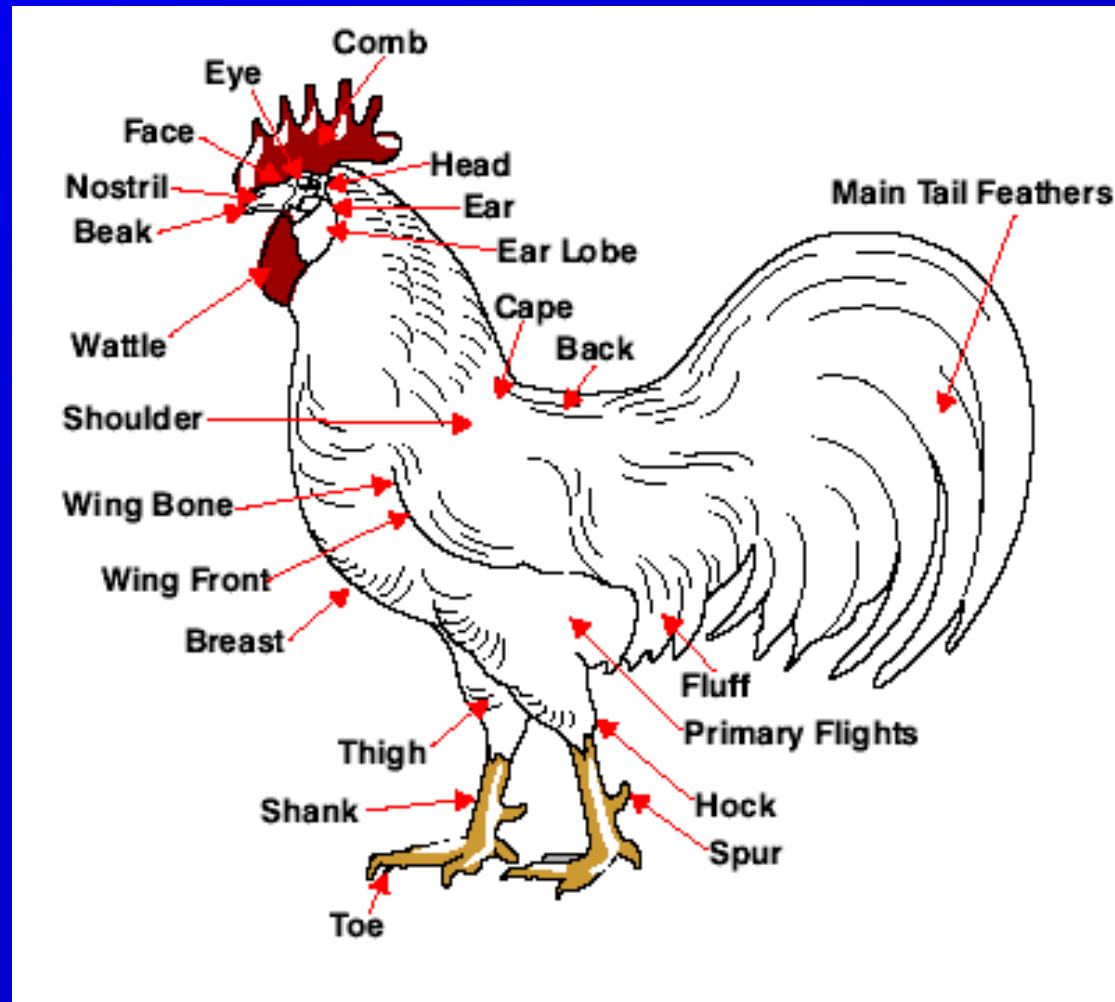


Digestive System

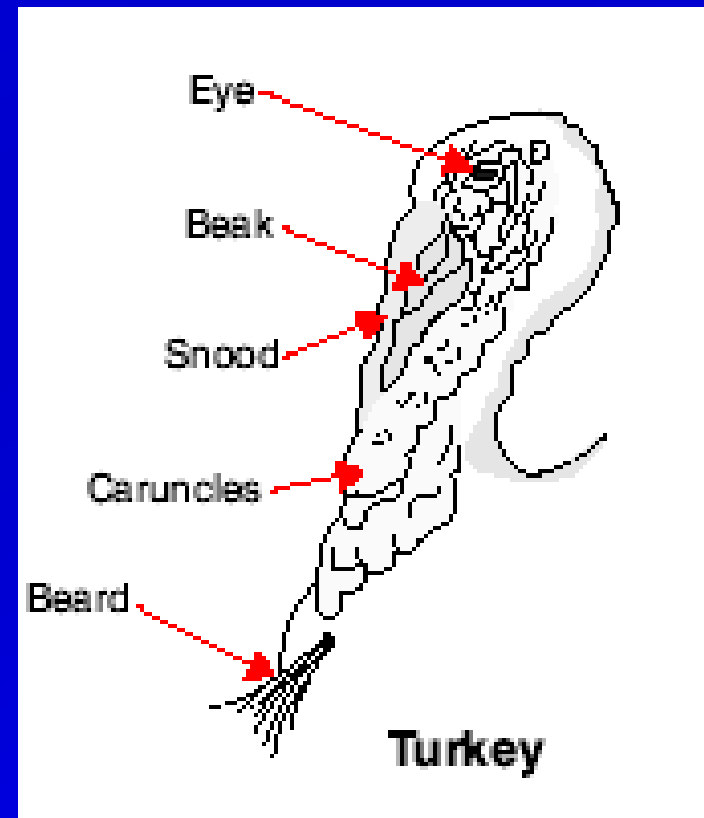
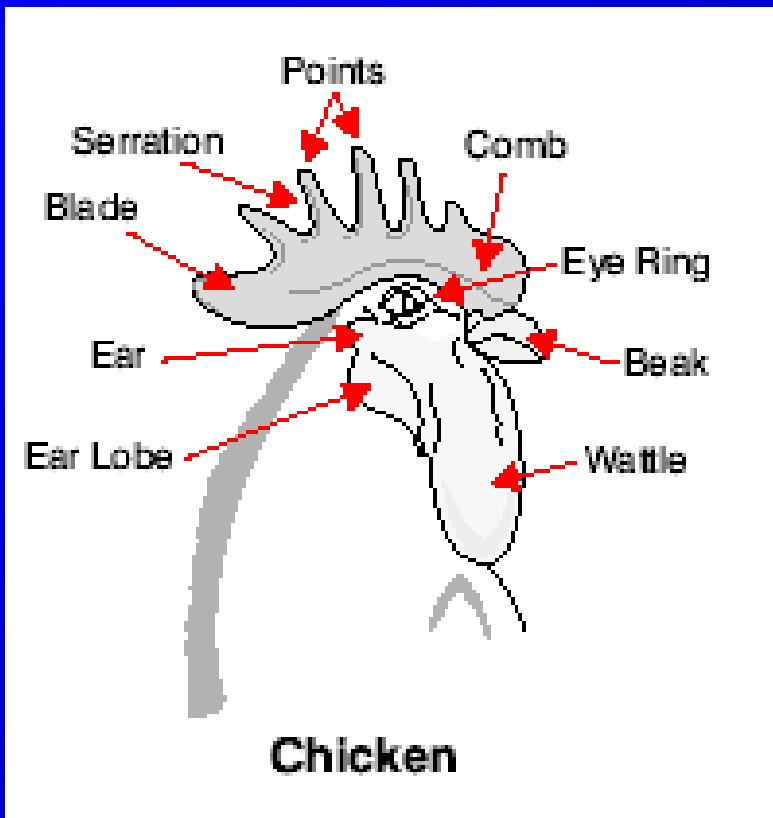


Reproductive Tract of Hen

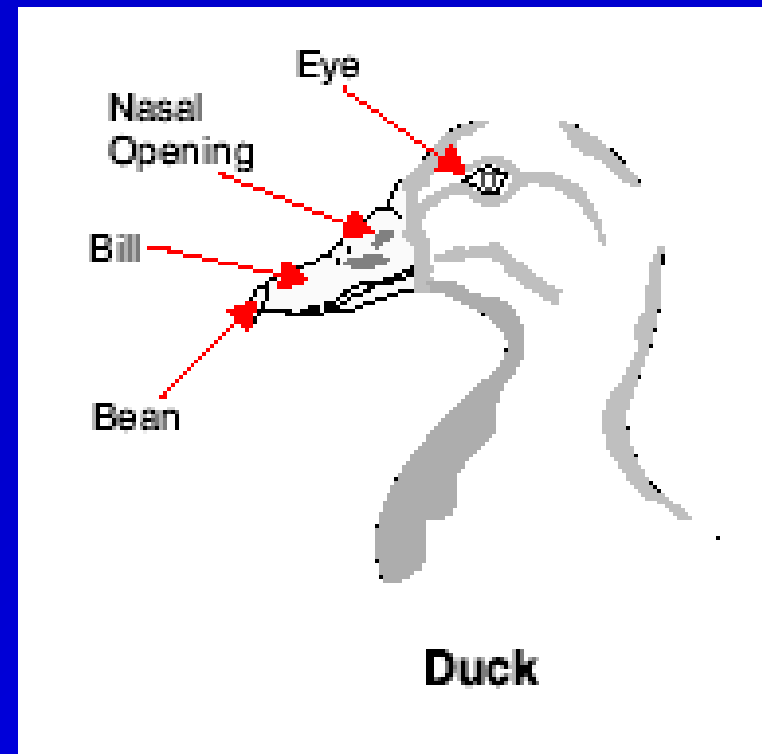
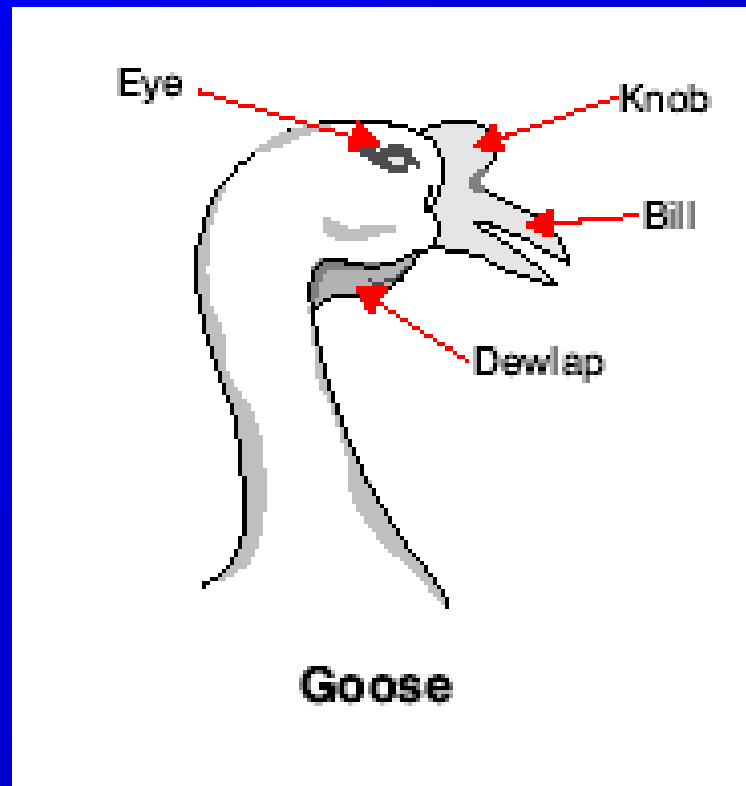
# External Parts of Poultry



# External Parts of Poultry



# External Parts of Poultry





# What are terms associated with poultry?

## Chickens

- **Layers**
  - chickens that are used to produce large quantities of eggs
  - eggs used for food and produce chicks
- **Broilers**
  - young chickens that weigh about 1.81 kgs, are 6 to 7 weeks old and used for meat
- **Chick**
  - baby chicken of either sex
- **Cockerels**
  - young male chicken

# What are terms associated with poultry?

## Chickens

- Roosters
  - mature males
- Pullets
  - young female chickens
- Hens
  - mature females
- Bantams
  - miniature chickens

## Turkeys

- Hens
  - mature females
- Tom
  - adult male
  - gobbler
- Poult
  - young turkey of either sex

# What are terms associated with poultry?

## Ducks

- have down that grows under feathers
- Hens
  - mature female
- Drake
  - mature male
- Duckling
  - young duck of both sexes

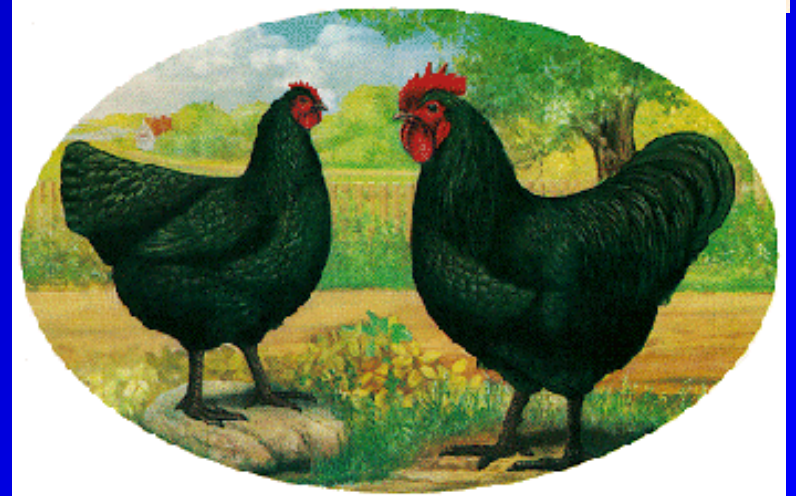
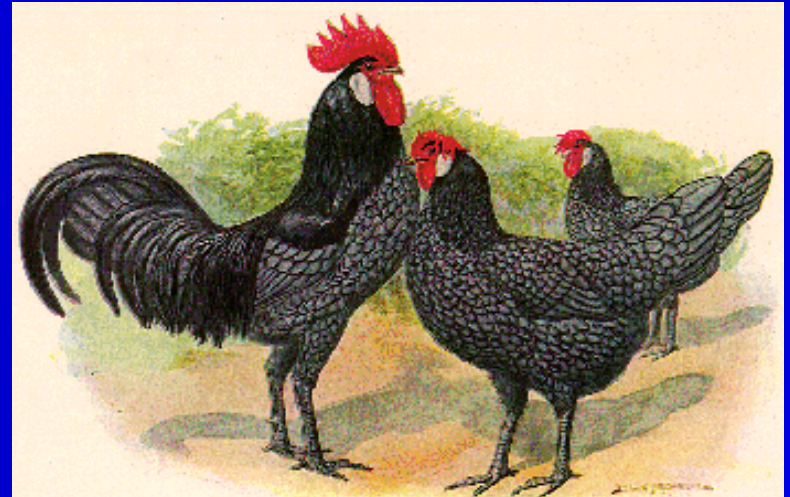
## Geese

- Goose
  - female at maturity
- Gander
  - male at maturity
- Goslings
  - young geese

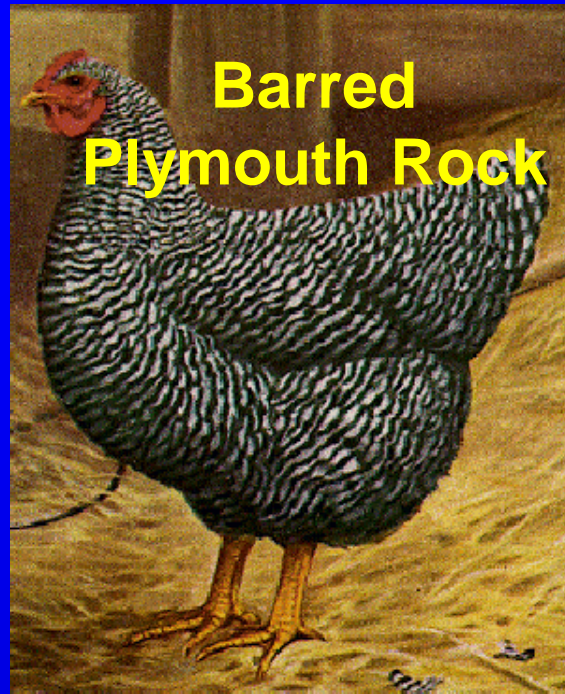
# Chickens

- 4 classes of chickens
  - Mediterranean
  - American
  - English
  - Asiatic
- Identification Characteristics
  - color of eggs, skin, eyes, earlobes, and plumage

**Andalusian**



**Australorp**



**Barred  
Plymouth Rock**



**Brahma**



**Cornish Game**



**Single-Comb  
White Leghorn**

# CHARACTERISTICS OF SOME TYPICAL BREEDS OF CHICKENS

Class and Breed	Eggs	Skin	Comb	Eyes	Earlobes	Shanks	Plumage
<b>Mediterranean:</b>							
Leghorn (White)	White	Yellow	Single	Reddish bay	White	Yellow	White
Comments: All three are small in size and are used mainly for egg production—Leghorn most popular							
Minorca (Black)	White	White	Single	Brown	White	Dark Slate	Black
Andalusian (Blue)	White	White	Single	Reddish bay	White	Dark Slaty Blue	Slaty Blue
<b>American:</b>							
Plymouth Rock (Barred)	Brown	Yellow	Single	Reddish bay	Red	Yellow	Barred (Sex-linked)
Comments: Dual purpose; used in crosses for sexing chicks at hatching.							
Plymouth Rock (White)	Brown	Yellow	Single	Reddish bay	Red	Yellow	White
Comments: Primary Use—Broiler							
New Hampshire	Brown	Yellow	Single	Reddish bay	Red	Yellow	Red
Comments: Primary Use—Broiler							
Rhode Island Red	Brown	Yellow	Single	Reddish bay	Red	Yellow	Dark Red
Comments: Dual Purpose							
<b>English:</b>							
Cornish (White)	Brown	Yellow	Pea	Pearl	Red	Yellow	White
Comments: Used in development of male lines for crossbreeding.							
Australorp	Tinted	White	Single	Brown	Red	Dark Slate; Bottom feet white	Black
Comments: Used in production of crossbreeds.							
<b>Asiatic:</b>							
Brahma (Light)	Brown	Yellow	Pea	Reddish bay	Red	Yellow; feathered	Columbian (white & black)
Comments: Used in crossbreeding for meat production.							

# Turkey Breeds



## Broad-Breasted Large White

- most popular breed
- developed from crosses
- males have black beards
- all have white feet, beaks, & shanks

# Ducks

- Breeds used for meat
- Call -Aylesbury
- Swedish -Muscovy
- Rouen -Cayuga
- White Pekin
- Breeds used for eggs
- Khaki Campbells
- Indian Runners

## White Pekin

- most commonly used
- originated in China
- Weigh 3.6 kgs.
- white feathered with yellowish skin
- nervous birds
- White-tinted eggs





© 1997 Oklahoma State University

**Pekin**

**Muscovy**

**Khaki Campbell**



**Call**



# Geese

- Used for meat, eggs, feathers, down and weeding crops
- Most common breeds
  - Toulouse
  - Embden
  - Chinese
  - Pilgrim
  - African

## Embden



# Review

- What is poultry?
- What are terms associated with poultry?
- What are different kinds and breeds of poultry?